



# 2006 International 14 Class World Team Racing Championship & World Championship Regatta



5-16 September 2006  
Alamitos Bay Yacht Club  
Long Beach, California, USA

## NOTICE OF RACE (REVISED)

**NOTE: This revision of the original Notice of Race entails a change in the name of the World Team Racing Championship only--no other changes from the original Notice of Race were made.**

The Organizing Authority for the 2006 International 14 Class World Team Racing Championship & World Championship Regatta will be Alamitos Bay Yacht Club (ABYC), Long Beach, California USA.

### 1. RULES

- 1.1. The regatta will be governed by the "rules" as defined in The Racing Rules of Sailing (RRS).
- 1.2. The United States Sailing Association prescription in rule 68, Damages, will apply and will be stated in full in the Sailing Instructions.
- 1.3. Appendix D shall apply to the World Team Racing Championship.
- 1.4. Rule 77 & Appendix G is modified in that G1.3(d) is deleted. Boats competing in this event are not required to carry identification on their spinnakers.
- 1.5. If there is a conflict among languages, the English text will prevail.
- 1.6. Competitors are reminded that, under the preamble of Part 2 of the RRS, boats racing must comply with rule 9 of the Inland Navigation Rules (72 COLREGS) when they meet other marine traffic not racing.

### 2. ADVERTISING

- 2.1. Advertising shall be permitted in accordance with ISAF Regulation 20, Category C.
- 2.2. The Organizing Authority may require all participating boats to display event-sponsor's advertising in accordance with ISAF Regulation 20.

### 3. ELIGIBILITY AND ENTRY

- 3.1. The regatta is open to all boats of the International 14 Class. Each competitor shall be a financial member of their national International 14 class association.
- 3.2. There are no restrictions on the number of teams entering the World Team Racing Championship or boats entering the World Championship Regatta.
- 3.3. Eligible boats may enter by completing the Entry Application and sending it, together with the required fees described below, to Alamitos Bay Yacht Club, 7201 E. Ocean BL, Long Beach, CA, 90803-4551 USA. Entries must be received by the close of business on 15 August 2006. Late entries may be accepted after this date and are subject to a late fee.

### 4. CONDITIONS OF WORLD TEAM RACING CHAMPIONSHIP REGATTA

- 4.1. A team will consist of four (4) boats from the same nation. A nation may enter more than one team at the discretion of the Organizing Authority.
- 4.2. Teams shall sail in a round robin, the number of races to be sailed to be as entry numbers, time and weather permits. Semi-finals may be sailed if circumstances permit and a final series will be sailed. The format and draw will be confirmed at the competitors' briefing.

### 5. CLASSIFICATION

- 5.1. The ISAF Sailor Classification Code will NOT apply.

## 6. FEES

- 6.1. Entry fees are as follows:

World Team Racing Championship	US\$400.00 per team
World Championship Regatta	US\$500.00 per boat
- 6.2. Other fees:

Late Fee	US\$100.00 per team or boat
----------	-----------------------------
- 6.3. Entry fees are payable in US funds and may be made via bank draft or similar instrument, credit card or wire transfer. Transactions are payable to Alamitos Bay Yacht Club. Transfer number: 122000496; account number 2480000717.
- 6.4. Participants are responsible for any bank or transaction fees. Any unpaid fees must be paid at Registration.

## 7. SCHEDULE

- 7.1. The regatta schedule is as follows:

Tuesday, 5 Sept. 2006	Registration and measurement.	0900-1700
Wednesday, 6 Sept. 2006	Registration and measurement. Competitor's briefing for World Team Racing Championship. World Team Racing Championship Opening Ceremony and reception.	0900-1700 1700 1800
Thursday, 7 Sept. 2006	Registration and measurement (World Championship Regatta only). World Team Racing Championship Day One.	0900-1200 1200
Friday, 8 Sept. 2006	Reserved for the re-measurement of boats that required attention (World Championship Regatta only). No new boats will be measured. World Team Racing Championship Day Two.	0900-1200 1200
Saturday, 9 Sept. 2006	World Championship Regatta practice race. World Team Racing Championship prizegiving ceremony. World Championship Regatta Opening Ceremony and reception.	1400 1800 1800
Sunday, 10 Sept. 2006	World Championship Regatta Day One.	1300
Monday, 11 Sept. 2006	World Championship Regatta Day Two.	1300
Tuesday, 12 Sept. 2006	World Championship Regatta Day Three.	1300
Wednesday, 13 Sept. 2006	World Championship Regatta Day Four.	1300
Thursday, 14 Sept. 2006	World Championship Regatta Day Five.	1300
Friday, 15 Sept. 2006	World Championship Regatta Day Six.	1300
Saturday, 16 Sept. 2006	World Championship Regatta Day Seven. World Championship Regatta Closing Ceremony and Prizegiving Dinner on RMS <i>Queen Mary</i> .	1200 1900

- 7.2. All competitors must check in with Registration prior to 1200 on Thursday, 7 September 2006, even if they have previously submitted an entry. No boat's entry will be complete until all forms, including measurement, are submitted and all fees paid.
- 7.3. One (1) race per day is scheduled for the World Championship Regatta; however, more than one (1) race per day may be sailed after a postponement or abandonment or if the Race Committee deems this to be advisable because of weather information.
- 7.4. A separate social schedule will be available at Registration.

## 8. MEASUREMENT

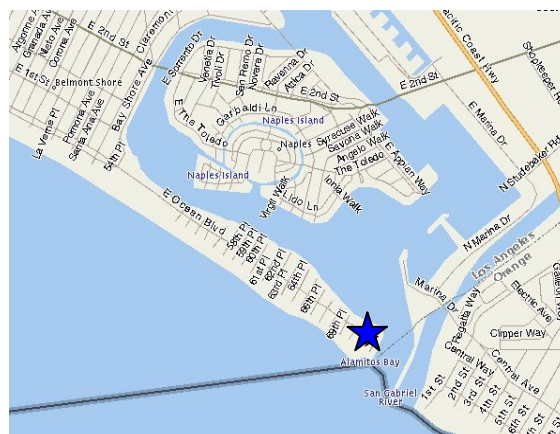
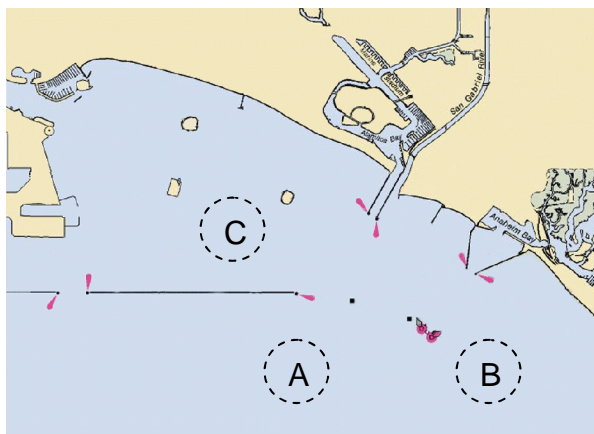
- 8.1. Each boat shall be presented for measurement after registration and check-in.
- 8.2. Each boat shall hold a valid measurement certificate and present it at time of Registration. Additional measurements to be made will include, but are not limited to, spars (including the top and bottom mast sections), rudders, centerboards, sails and sail numbers.
- 8.3. Additional measurement checks may be conducted during the regatta at the discretion of the Organizing Authority.
- 8.4. Following each day's racing one or more boats may be inspected for compliance with class rules.

## 9. SAILING INSTRUCTIONS

- 9.1. Sailing Instructions will be available at Registration.
- 9.2. Preliminary Sailing Instructions will be available on the Alamitos Bay Yacht Club website ([www.abyc.org](http://www.abyc.org)) on or before 1 August 2006.

## 10. VENUE

- 10.1. Races of the World Championship Regatta will be held in the waters of San Pedro Bay outside the Long Beach Breakwater.
- 10.2. Races of the World Team Racing Championship will be held in the waters of the Long Beach Outer Harbor inside the Long Beach Breakwater.
- 10.3. The chart left below left shows the approximate locations of the racing areas. Areas A and B are for the World Championship Regatta; Area C is for the World Team Racing Championship Regatta.
- 10.4. Alamitos Bay Yacht Club is located on Alamitos Bay in the southeastern part of Long Beach, California. The chart below right shows location of the club (star on chart).



## 11. THE COURSES

- 11.1. The World Championship Regatta will be sailed on triangular courses including windward, reaching and leeward marks. Course diagrams will be supplied with the Sailing Instructions.
- 11.2. The World Team Racing Championship will be sailed on short courses that will include beats, reaches and runs. Course diagrams will be supplied with the Sailing Instructions.

## 12. PENALTY SYSTEM

- 12.1. For the World Team Racing Championship, Appendix D shall apply. Races will be umpired.
- 12.2. For the World Championship Regatta, rule 44 will be changed in the Sailing Instructions such that, if an incident occurs outside the two-length zone of a rounding or finishing mark, rules 44.1 and 44.2 are changed so that only one (1) turn, including one (1) tack and one (1) gybe, are required.
- 12.3. An International Jury will be appointed in accordance with Appendix N of the RRS. In accordance with Rule 70.4, there shall be no right of appeal from the decisions of the International Jury.

## 13. SCORING

- 13.1. The World Team Racing Championship will be scored in accordance with Appendix D3.
- 13.2. For the World Championship Regatta, seven (7) races are scheduled of which four (4) must be completed to constitute a series. When fewer than five (5) races are completed, a boat's series score will be the total of her race scores.

## 14. SUPPORT BOATS

- 14.1. Support boats are allowed.
- 14.2. Support boats must be registered with the Organizing Authority at registration.
- 14.3. Rules governing the conduct of support boats will be in the Sailing Instructions.

## 15. BERTHING

Boats shall be stored overnight on a public beach in Alamitos Bay adjacent to Alamitos Bay Yacht Club. Each boat must have its own trolley. Security will be provided during the regatta.

## **16. HAUL-OUT RESTRICTIONS**

No boat may be stored overnight on the grounds of Alamitos Bay Yacht Club or anywhere else except with prior permission of the Organizing Authority.

## **17. RADIO COMMUNICATIONS**

A boat shall neither make radio transmissions while racing nor receive radio communications not available to all boats. This restrictions also applies to mobile telephones.

## **18. PRIZES**

- 18.1. The team winning the World Team Racing Championship will be awarded the Global Team Racing Challenge Trophy. Individual trophies will be awarded to the skipper and crew of each of the top three (3) teams.
- 18.2. The skipper and crew of the boat winning the World Championship Regatta will be awarded the World Championship Trophy. Individual trophies will be presented to the skipper and crew of each of the top ten (10) finishers.
- 18.3. The highest-placing skipper or crew over 50 years of age will be awarded the Windmaster Trophy.
- 18.4. The skipper and crew winning the first race of the World Championship Regatta will be awarded the Chris Benedict Perpetual Trophy.
- 18.5. Additional trophies will be presented.

## **19. DISCLAIMER OF LIABILITY**

Competitors participate in the regatta entirely at their own risk. See rule 4, Decision to Race. The organizing authority will not accept any liability for material damage or personal injury or death sustained in conjunction with or prior to, during, or after the regatta.

## **20. INSURANCE**

Each participating boat shall be insured with valid third-party liability insurance with minimum coverage of US\$300,000.00 per event or the equivalent. Each boat shall have proof of insurance coverage and present it at time of Registration.

## **21. FURTHER INFORMATION**

For further information please contact:

Chris Ericksen, Regatta Chair  
Phone: 562-522-8678  
E-mail: [Chris491@earthlink.net](mailto:Chris491@earthlink.net)

Yvonne Galvez, Co-Chair  
Phone: 949-362-2819  
E-mail: [YMGalvez@hotmail.com](mailto:YMGalvez@hotmail.com)

Paul Galvez, Co-Chair  
Phone: 949-362-2819  
E-mail: [GalvezPaul@hotmail.com](mailto:GalvezPaul@hotmail.com)